

ASTRA AEROLAB - INDUSTRIAL LOT 109/1

CABBAGE TREE ROAD, WILLIAMTOWN

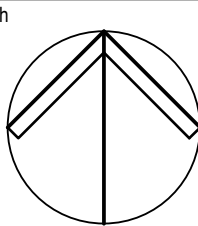


DRAWING SCHEDULE	
DRAWING No.	DRAWING TITLE
C101-001	COVER SHEET, LOCALITY AND DRAWING INDEX
C102-001	EXISTING SITE PLAN
C103-001	OVERALL SITE PLAN
C104-001	STORMWATER MANAGEMENT PLAN
C105-001	SOIL EROSION AND SEDIMENT CONTROL PLAN
C105-101	EROSION AND SEDIMENT CONTROL NOTES AND DETAILS

© COPYRIGHT of this design and plan is the property of ACOR Consultants Pty Ltd. ACN 079 306 246 ABN 40 079 306 246, all rights reserved.
It must not be used, modified, reproduced or copied wholly or in part without written permission from ACOR Consultants Pty Ltd.

This drawing has been assigned an electronic code that signifies the drawing has been checked and approved by:

B	ISSUED FOR DEVELOPMENT APPLICATION	16.09.22	KB	JK	
A	ISSUED FOR DEVELOPMENT APPLICATION	08.09.22	KB	JK	
Issue	Description	Date	Drawn	Approved	



Client

GREATER NEWCASTLE
AEROTROPOLIS PTY LTD



Architect



412 KING STREET, NEWCASTLE NSW 2300
PHONE : +61 2 4929 2353



ENGINEERS | MANAGERS | INFRASTRUCTURE PLANNERS | DEVELOPMENT CONSULTANTS

ACOR Consultants Pty Ltd

Level 1, 54 Union Street
Cooks Hill, Newcastle NSW 2300
T +61 2 4926 4811



Project

ASTRA AEROLAB
INDUSTRIAL LOT 109/1

CABBAGE TREE ROAD, WILLIAMTOWN 2318

Drawing Title

COVER SHEET, LOCALITY AND DRAWING INDEX

Drawn	Date	Scale	A1	Q.A. Check	Date
KB	SEP 2022	N.T.S		BG	08.09.22
Designed	Project No.	Dwg. No.		Issue	
JK	NS220935	C101-001		B	

NOT FOR CONSTRUCTION

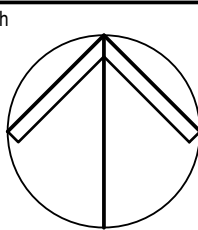
1167-188-1-A-Design-Proposal-04222-NS220935-109/1-001-001.dwg
Sep 08, 2022 - 12:21 PM



LEGEND	
— EX/D —	EXISTING STORM WATER DRAINAGE LINE
— EX/W —	EXISTING POTABLE WATER MAIN
— EX/S —	EXISTING SEWER MAIN
— EX/C —	EXISTING COMMUNICATIONS LINE
— EX/HV —	EXISTING HIGH VOLTAGE POWER LINE
- - - - -	EXISTING BOUNDARY LINE

SCALE 1:500 @ A1
SCALE 1:1000 @ A3
© COPYRIGHT of this design and plan is the property of ACOR Consultants Pty Ltd. ACN 079 306 246 ABN 40 079 306 246, all rights reserved.
It must not be used, modified, reproduced or copied wholly or in part without written permission from ACOR Consultants Pty Ltd.

This drawing has been assigned an electronic code that signifies the drawing has been checked and approved by: NAME&CREDENTIALS			
B	ISSUED FOR DEVELOPMENT APPLICATION	16.09.22	KB JK
A	ISSUED FOR DEVELOPMENT APPLICATION	08.09.22	KB JK
Issue	Description	Date	Drawn Approved



Client

GREATER NEWCASTLE AEROTROPOLIS PTY LTD

Architect

412 KING STREET, NEWCASTLE NSW 2300
PHONE : +61 2 4929 2353

ACOR Consultants Pty Ltd
Level 1, 54 Union Street
Cooks Hill, Newcastle NSW 2300
T +61 2 4926 4811

ENGINEERS | MANAGERS | INFRASTRUCTURE PLANNERS | DEVELOPMENT CONSULTANTS

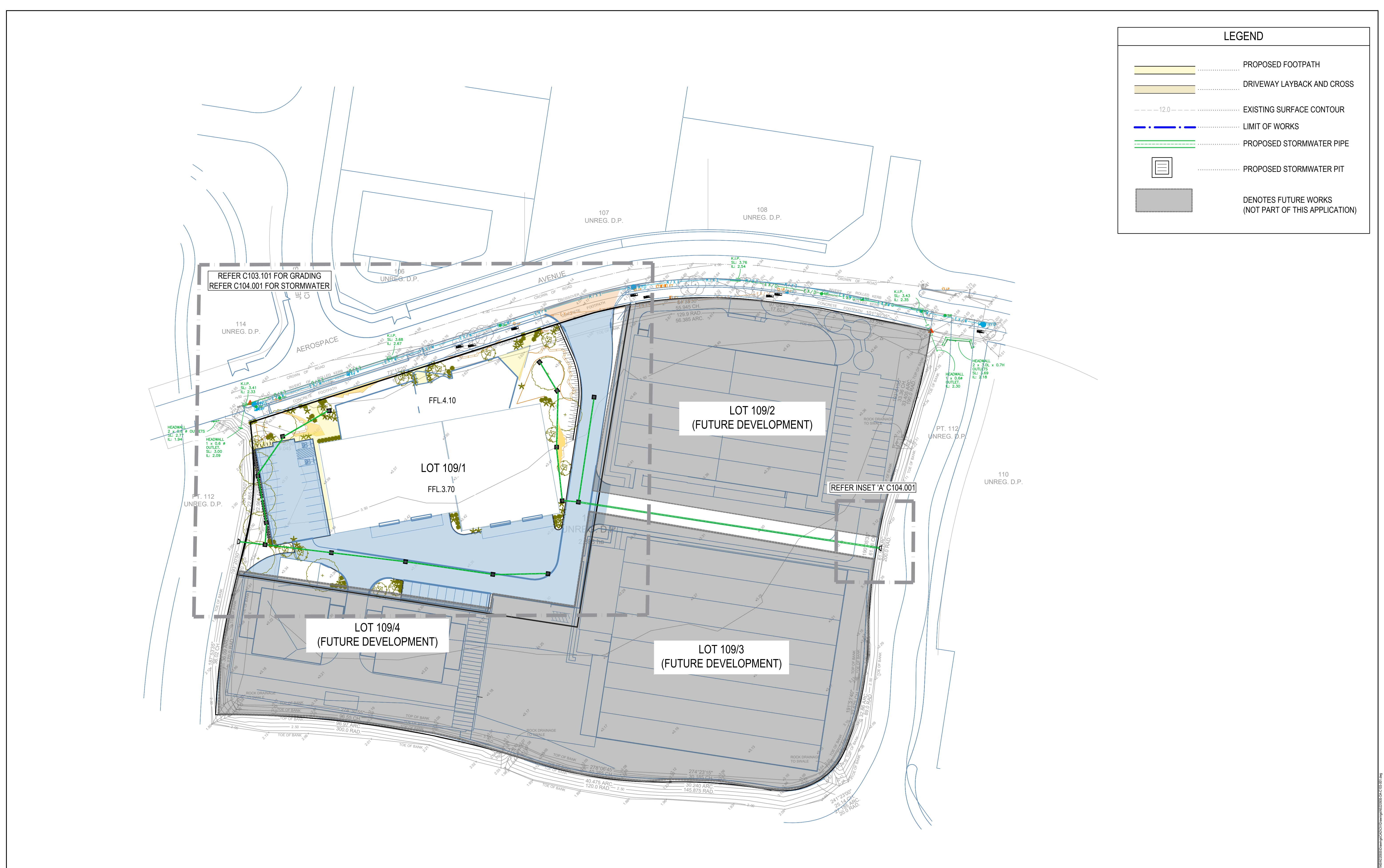
Project

ASTRA AEROLAB INDUSTRIAL LOT 109/1

CABBAGE TREE ROAD, WILLIAMTOWN 2318

Drawing Title EXISTING SITE PLAN			
Drawn KB	Date SEP 2022	Scale 1:500	A1
Designed JK	Project No. NS220935	G.A. Check BG	Date 08.09.22
	Dwg. No. C102-001	Issue B	

NOT FOR CONSTRUCTION



LEGEND

PROPOSED FOOTPATH

DRIVEWAY LAYBACK AND CROSS

EXISTING SURFACE CONTOUR

LIMIT OF WORKS

PROPOSED STORMWATER PIPE

PROPOSED STORMWATER PIT

DENOTES FUTURE WORKS
(NOT PART OF THIS APPLICATION)

SCALE 1:500 @ A1
SCALE 1:1000 @ A3

0

5

10

20

30

40

50 metres

© COPYRIGHT of this design and plan is the property of ACOR Consultants Pty Ltd. ACN 079 306 246 ABN 40 079 306 246, all rights reserved.
It must not be used, modified, reproduced or copied wholly or in part without written permission from ACOR Consultants Pty Ltd.

This drawing has been assigned an electronic code that signifies the drawing has been checked and approved by: NAME&CREDENTIALS

North

Client

GREATER NEWCASTLE
AEROTROPOLIS PTY LTD

Architect

EJE architecture

412 KING STREET, NEWCASTLE NSW 2300
PHONE : +61 2 4929 2353

ACOR Consultants Pty Ltd

Level 1, 54 Union Street
Cooks Hill, Newcastle NSW 2300
T +61 2 4926 4811

ACOR CONSULTANTS

ENGINEERS | MANAGERS | INFRASTRUCTURE PLANNERS | DEVELOPMENT CONSULTANTS

Project

ASTRA AEROLAB
INDUSTRIAL LOT 109/1

CABBAGE TREE ROAD, WILLIAMTOWN 2318

Drawing Title

OVERALL SITE PLAN

Drawn

KB

Date

SEP 2022

Scale

1:500

A1

G.A. Check

BG

Date

08.09.22

Designed

JK

Project No.

NS220935

Dwg. No.

C103-001

Issue

B

LEGEND

KO

- KERB ONLY

FK

- FLUSH KERB

- EXISTING SITE BOUNDARY

- LIMIT OF WORKS

- EXISTING SURVEY CONTOURS

- PROPOSED ARCHITECTURAL LAYOUT

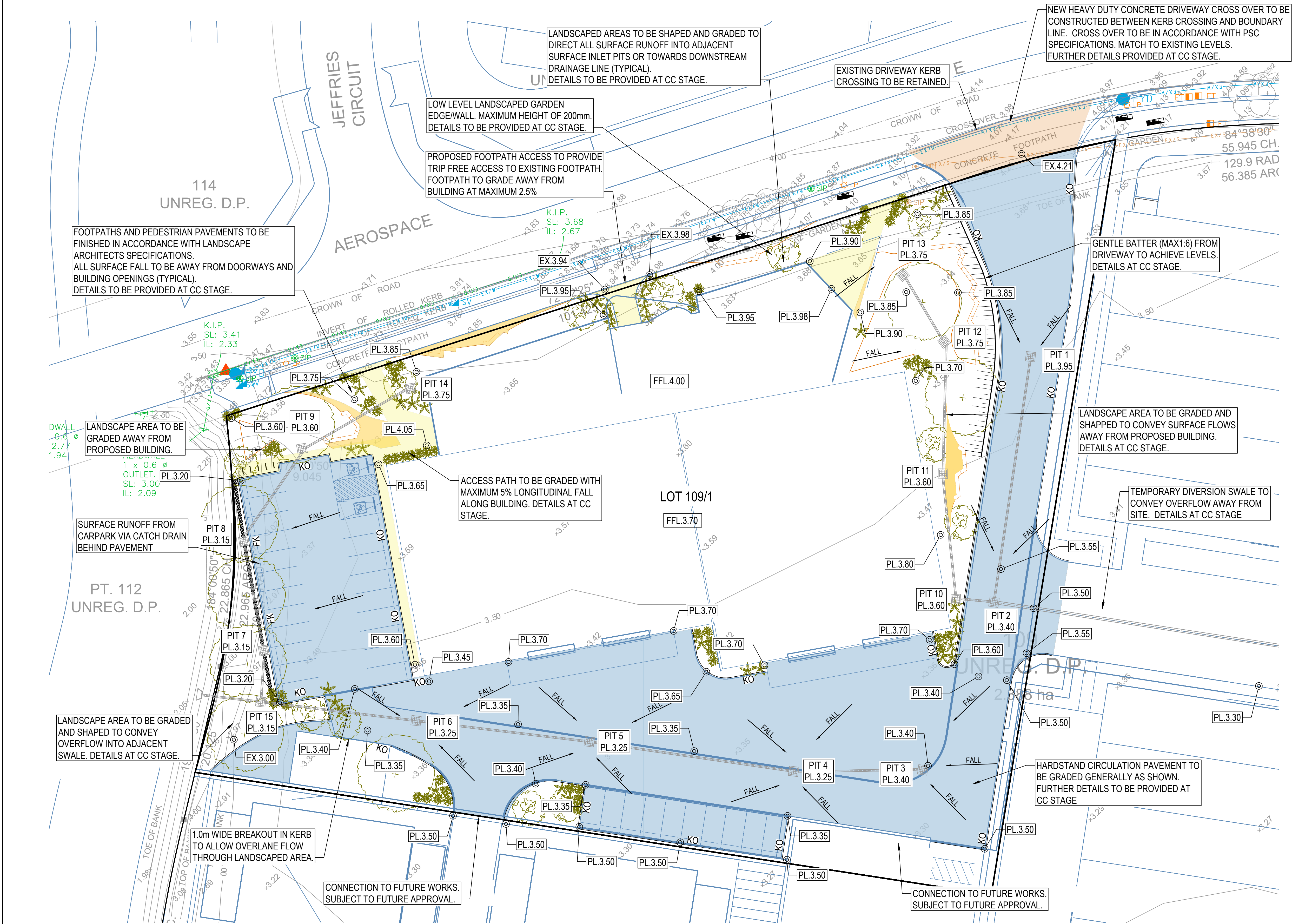
- PROPOSED BATTER LINE

⊙ PL10.00

- PROPOSED DESIGN LEVELS

- PROPOSED FOOTPAVING

- PROPOSED HEAVY DUTY CONCRETE CROSS OVER TO PSC SPECIFICATIONS.

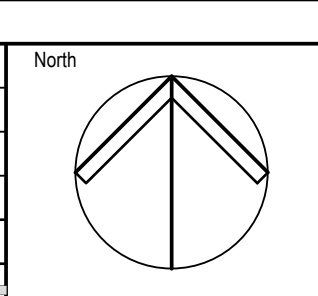


SCALE 1:250 @ A1
SCALE 1:500 @ A3

© COPYRIGHT of this design and plan is the property of ACOR Consultants Pty Ltd, ACN 079 306 246 ABN 40 079 306 246, all rights reserved.
It must not be used, modified, reproduced or copied wholly or in part without written permission from ACOR Consultants Pty Ltd.

This drawing has been assigned an electronic code that signifies the drawing has been checked and approved by: NAME&CREDENTIALS

Issue	Description	Date	Drawn	Approved
B	ISSUED FOR DEVELOPMENT APPLICATION	16.09.22	KB	JK
A	ISSUED FOR DEVELOPMENT APPLICATION	08.09.22	KB	JK



Client

GREATER NEWCASTLE
AEROTROPOLIS PTY LTD

Architect

412 KING STREET, NEWCASTLE NSW 2300
PHONE : +61 2 4929 2353

ACOR Consultants Pty Ltd

Level 1, 54 Union Street
Cooks Hill, Newcastle NSW 2300
T +61 2 4926 4811

ENGINEERS | MANAGERS | INFRASTRUCTURE PLANNERS | DEVELOPMENT CONSULTANTS

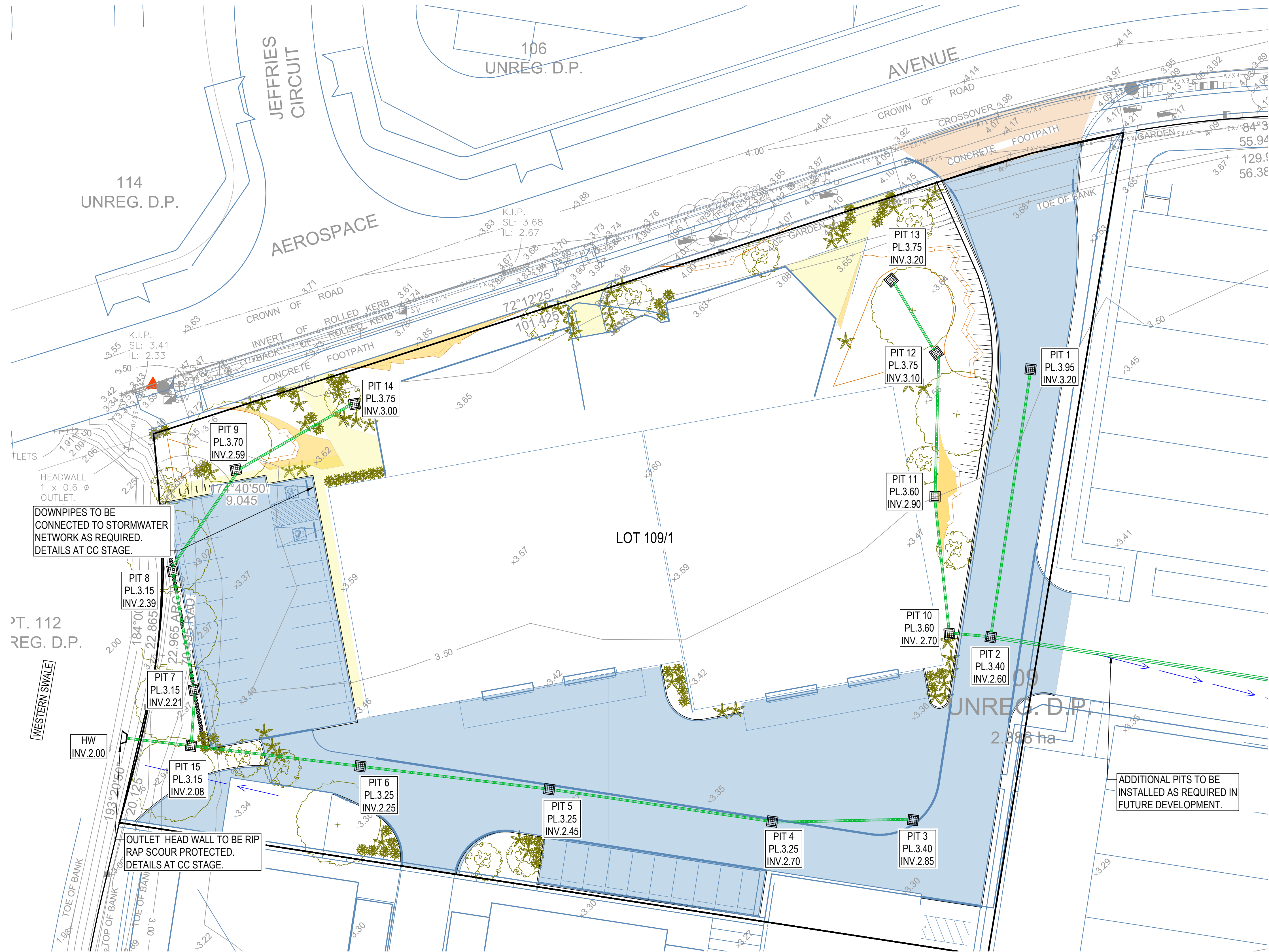
Project

ASTRA AEROLAB
INDUSTRIAL LOT 109/1

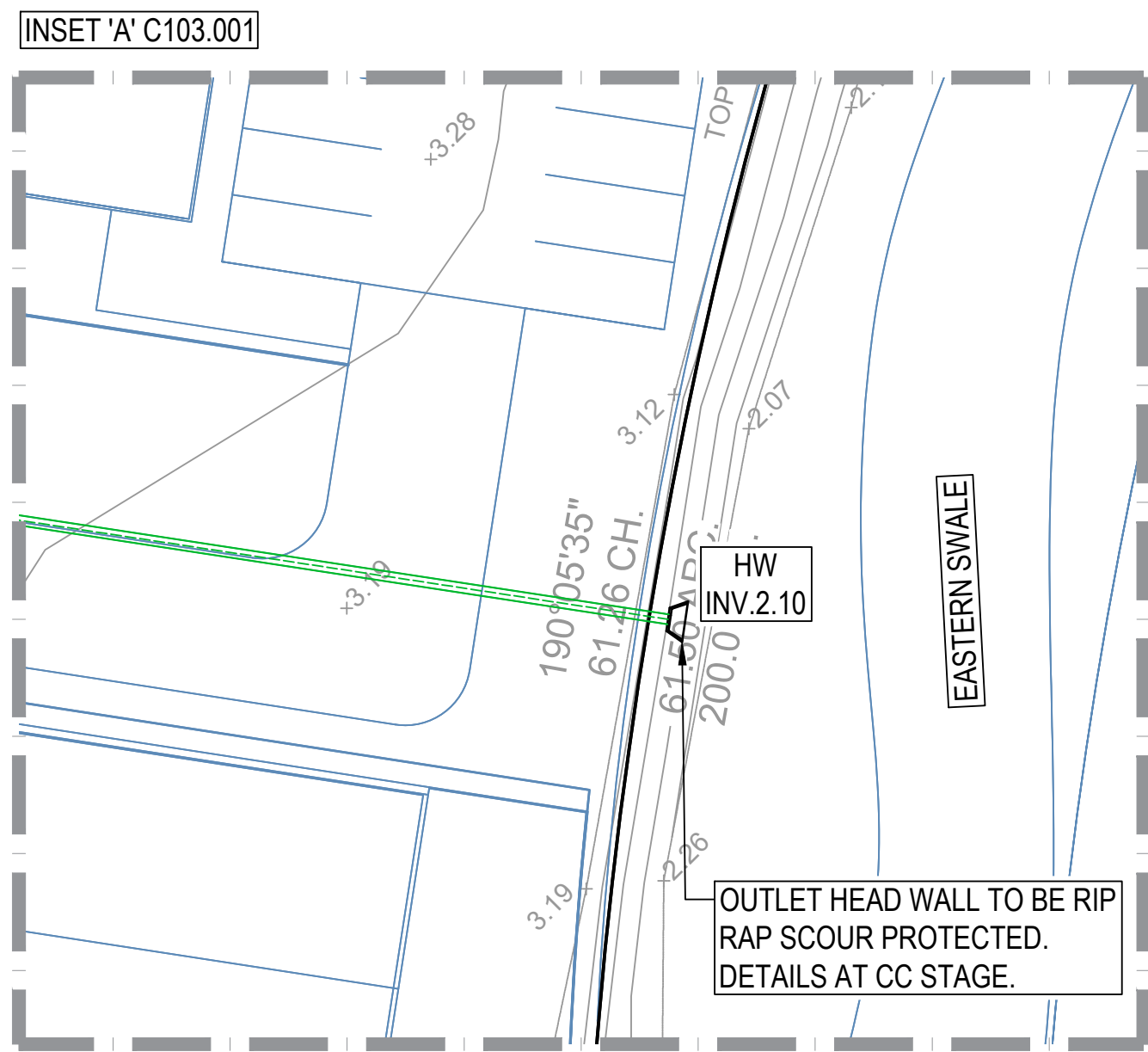
CABBAGE TREE ROAD, WILLIAMTOWN 2318

Drawing Title SITE GRADING PLAN					
Drawn KB	Date SEP 2022	Scale 1:250	A1	G.A. Check BG	Date 08.09.22
Designed JK	Project No. NS220935	Dwg. No. C103-101	Issue B		

NOT FOR CONSTRUCTION



LEGEND	
	- EXISTING SURVEY CONTOURS
	- PROPOSED ARCHITECTURAL LAYOUT
	- PROPOSED STORMWATER PIPE IN ACCORDANCE WITH AS3500. MIN LONGITUDINAL FALL OF 1.0%
	- PROPOSED STORMWATER PIT IN ACCORDANCE WITH AS3500. DETAILS AND LID CLASSES TO BE PROVIDED AT CC STAGE
	- STORMWATER FROM ADJACENT SUBDIVISION

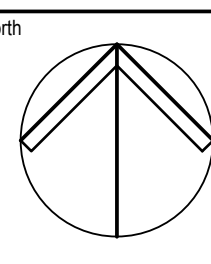


SCALE 1:250 @ A1
SCALE 1:500 @ A3

© COPYRIGHT of this design and plan is the property of ACOR Consultants Pty Ltd. ACN 079 306 246 ABN 40 079 306 246, all rights reserved. It must not be used, modified, reproduced or copied wholly or in part without written permission from ACOR Consultants Pty Ltd.

This drawing has been assigned an electronic code that signifies the drawing has been checked and approved by: NAME&CREDENTIALS

Issue	Description	Date	Drawn	Approved
B	ISSUED FOR DEVELOPMENT APPLICATION	16.09.22	KB	JK
A	ISSUED FOR DEVELOPMENT APPLICATION	08.09.22	KB	JK



Client
**GREATER NEWCASTLE
AEROTROPOLIS PTY LTD**



Architect
E/E architecture
412 KING STREET, NEWCASTLE NSW 2300
PHONE : +61 2 4929 2353

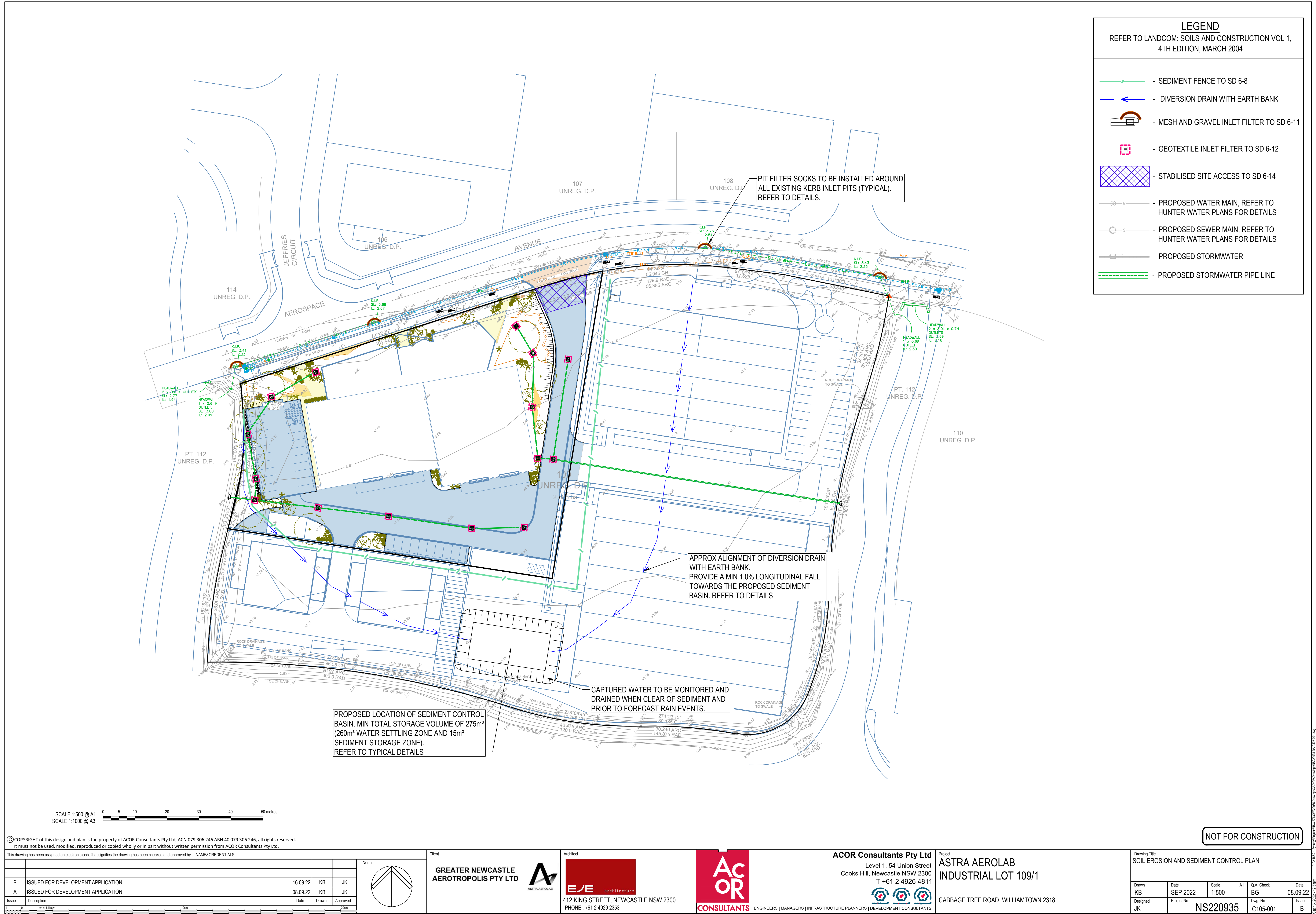


ACOR Consultants Pty Ltd
Level 1, 54 Union Street
Cooks Hill, Newcastle NSW 2300
T +61 2 4926 4811

Project
**ASTRA AEROLAB
INDUSTRIAL LOT 109/1**
CABBAGE TREE ROAD, WILLIAMTOWN 2318

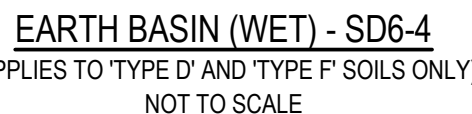
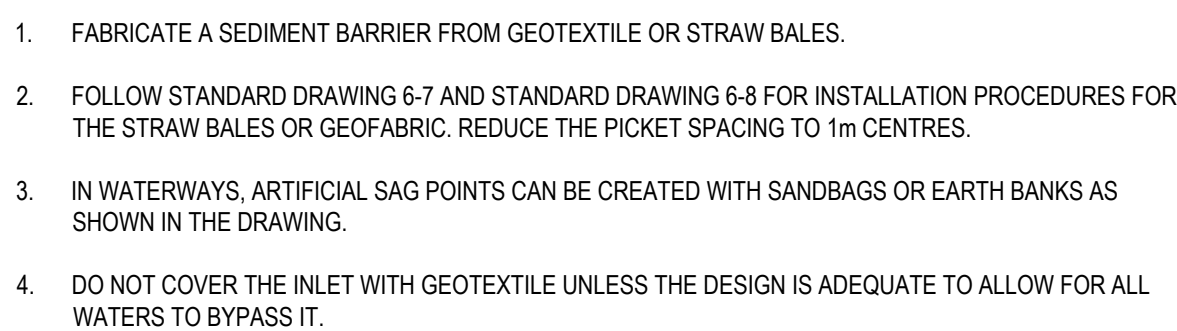
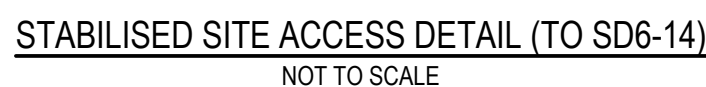
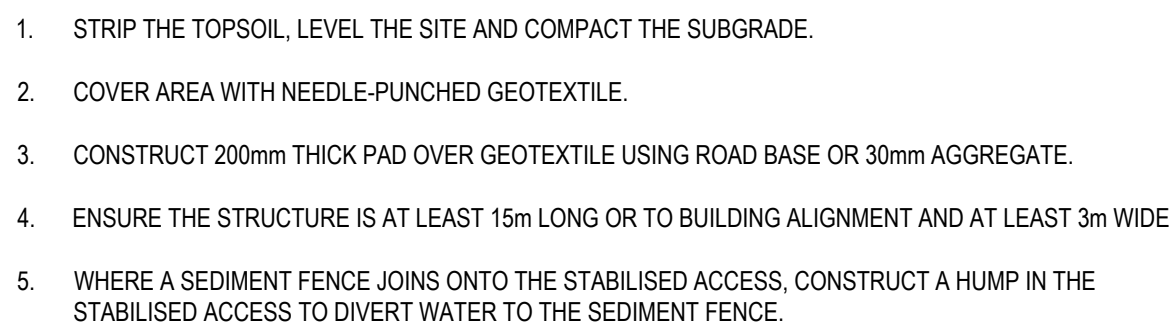
Drawing Title STORMWATER MANAGEMENT PLAN					
Drawn KB	Date SEP 2022	Scale 1:250	A1	G.A. Check BG	Date 08.09.22
Designed JK	Project No. NS220935	Dwg. No. C104-001	Issue B		

NOT FOR CONSTRUCTION





1. CONSTRUCT SEDIMENT FENCES AS CLOSE AS POSSIBLE TO PARALLEL TO THE CONTOURS OF THE SITE, BUT WITH SMALL RETURNS AS SHOWN IN THE DRAWING TO LIMIT THE CATCHMENT AREA OF ANY ONE SECTION. THE CATCHMENT AREA SHOULD BE SMALL ENOUGH TO LIMIT WATER FLOW IF CONCENTRATED AT ONE POINT TO 50L PER SECOND IN THE DESIGN STORM EVENT, USUALLY THE 10 YR EVENT.
2. CUT A 150mm DEEP TRENCH ALONG THE UPSLOPE LINE OF THE FENCE FOR THE BOTTOM OF THE FABRIC TO BE ENTRENCHED.
3. DRIVE 1.5m LONG STAR PICKETS INTO GROUND AT 2.5m INTERVALS (MAX) AT THE DOWN SLOPE EDGE OF THE TRENCH. ENSURE ANY STAR PICKETS ARE FITTED WITH SAFETY CAPS.
4. FIX SELF SUPPORTING GEOTEXTILE TO THE UPSLOPE SIDE OF THE POSTS ENSURING IT GOES TO THE BASE OF THE TRENCH. FIX THE GEOTEXTILE WITH WIRE TIES OR AS RECOMMENDED BY THE MANUFACTURER. ONLY USE GEOTEXTILE SPECIFICALLY PRODUCED FOR SEDIMENT FENCING. THE USE OF SHADE CLOTH FOR THIS PURPOSE IS NOT SATISFACTORY.
5. JOIN SECTIONS OF FABRIC AT A SUPPORT POST WITH A 150mm OVERLAP.
6. BACKFILL THE TRENCH OVER THE BASE OF THE FABRIC AND COMPACT IT THOROUGHLY OVER THE GEOTEXTILE.



1. REMOVE ANY VEGETATION AND TOPSOIL FROM UNDER THE DAM WALL AND FROM WITHIN THE STORAGE AREA.
2. CONSTRUCT A CUT-OFF TRENCH 500 mm DEEP AND 1200 mm WIDE ALONG THE CENTRELINE OF THE EMBANKMENT EXTENDING TO A POINT ON THE GULLY WALL LEVEL WITH THE RISER CREST.
3. MAINTAIN THE TRENCH FREE OF WATER AND RECOMPACT THE MATERIALS WITH EQUIPMENT AS SPECIFIED IN THE SWMP TO 95% STANDARD PROCTOR DENSITY.
4. SELECT FILL FOLLOWING THE SWMP THAT IS FREE OF ROOTS, WOOD, ROCK, LARGE STONE OR FOREIGN MATERIAL.
5. PREPARE THE SITE UNDER THE EMBANKMENT BY RIPPING TO AT LEAST 100 mm TO HELP BOND COMPACTED FILL TO THE EXISTING SUBSTRATE.
6. SPREAD THE FILL IN 100 mm TO 150 mm LAYERS AND COMPACT IT AT OPTIMUM MOISTURE CONTENT FOLLOWING THE SWMP.
7. CONSTRUCT THE EMERGENCY SPILLWAY.
8. REHABILITATE THE STRUCTURE FOLLOWING THE SWMP.

NOT FOR CONSTRUCTION